



Rotary Jet Head LPO-TJ20G

Technical Data Sheet

The rotary jet head LPO-TJ20G runs through a 3D jet cleaning cycle for a set period of time. It is water-powered so it ensures that tanks are cleaned safely and to an extremely high standard. When it is used in breweries, food and milk production, as well as in many other industries, the device is adapted for cleaning containers with a capacity of between 15 and 150m³.

Applications

Can be used in the beverage, food, chemical, and pharmaceutical industry, as well as for milk production

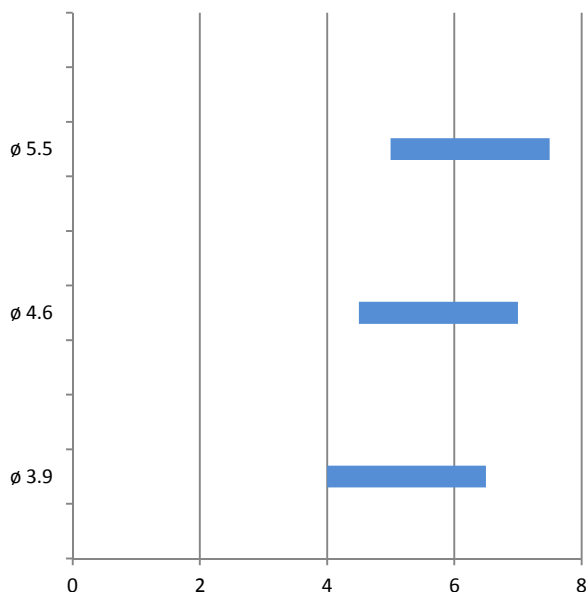
Spray pattern



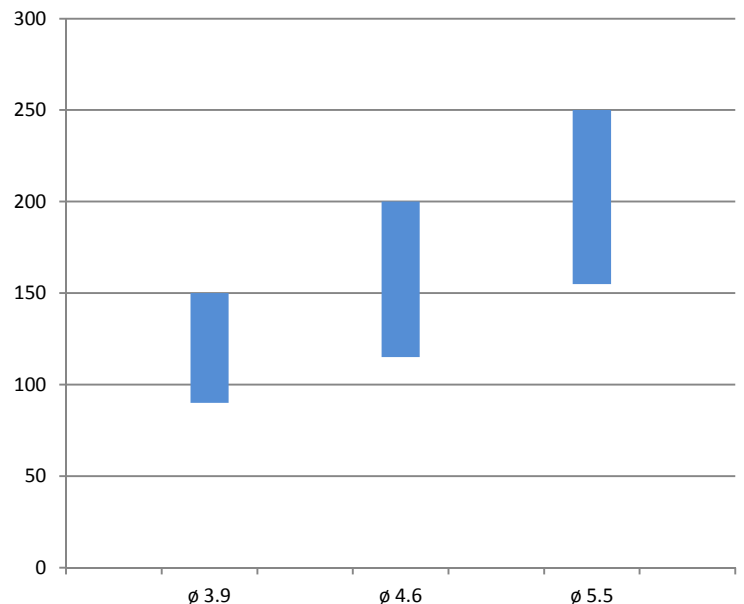
Specifications

Cleaning radius max:	7.5m
Container opening min:	ø 110 mm
Operating pressure max: Recommended operating pressure:	8 bar 5 to 6.5 bar
Flow rate min / max:	90 / 250 l/min
Operating temperature max:	95° C
Standard materials:	AISI 316L, EPDM, PVDF, PFA
Also available:	toothed gear in PEEK
Use in ATEX areas possible:	Yes
Available certificates:	2.1 / 3.1 / ATEX

Cleaning radius [m]

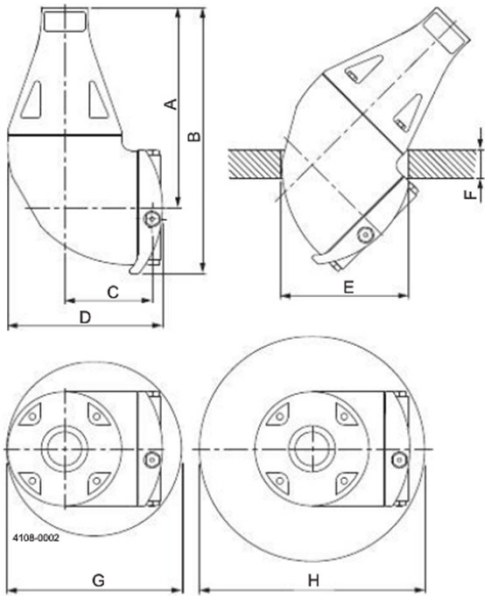


Water consumption [l/min]



Rotary Jet Head LPO-TJ20G

Technical Data Sheet



	A	B	C	D	E	F	G	H
Dimensions in mm	178	228.5	80	140	ø110	max. 25	ø150	ø195

ordering aid = please tick to select

Connection	4 x ø3.9 Jet nozzles		4 x ø4.6 Jet nozzles		4 x ø5.5 Jet nozzles	
	PVDF (Standard)	PEEK	PVDF (Standard)	PEEK	PVDF (Standard)	PEEK
Thread (1" RP)	<input type="checkbox"/> TE20G000	<input type="checkbox"/> TE20G000-02	<input type="checkbox"/> TE20G002	<input type="checkbox"/> TE20G002-02	<input type="checkbox"/> TE20G004	<input type="checkbox"/> TE20G004-02
Thread (1" NPT)	<input type="checkbox"/> TE20G020	<input type="checkbox"/> TE20G020-02	<input type="checkbox"/> TE20G022	<input type="checkbox"/> TE20G022-02	<input type="checkbox"/> TE20G024	<input type="checkbox"/> TE20G024-02